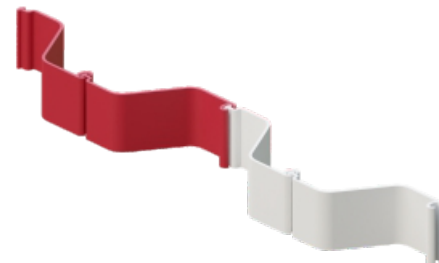
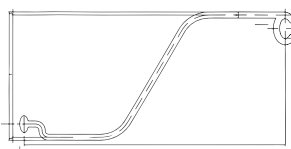


PVC ECOLOGICAL BARRIER SYSTEM EPZ



EPZ-25/12/6,5

	unit	value
Width	mm	250
Height	mm	120
Thickness	mm	6,5
Moment of inertia 1m	cm ⁴	2381,03
Section modulus 1m	cm ³	376,15
Maximum bending moment 1m	kN-m	16,55
Allowable bending moment 1m	kN-m	8,28



Number of pieces / 1 running meter: 4

MATERIAL PROPERTIES

	Characteristic	Unit	Requirement	Required Norm
1	Density	g/cm ³	1,45 ± 5%	PN-EN ISO 1183-3:2003
2	Tensile strength	Mpa	≥44	PN-EN ISO 527-2:2012
3	Tensile modulus of elasticity	Mpa	≥2700	PN-EN ISO 527-2:2012
4	Bending modulus of elasticity	Mpa	≥2800	PN-EN ISO 178:2011
5	Shear strength	Mpa	≥40	ASTM D 732-17
6	Flexural strength	Mpa	≥70	PN-EN ISO 178:2011
7	Shore D hardness	Shore'a D	≥72	PN-EN ISO 868:2005
8	Water absorption	%	≤0,03	PN-EN ISO 62:2008
9	Vicat softening temperature	°C	≥81	PN-EN ISO 306:2014-02
10	Charpy impact test	kJ/m ²	≥30	PN-EN ISO 179-1:2010
11	Aging resistance	%	≥4 in greyscale	PN-EN 20105-A03:1996